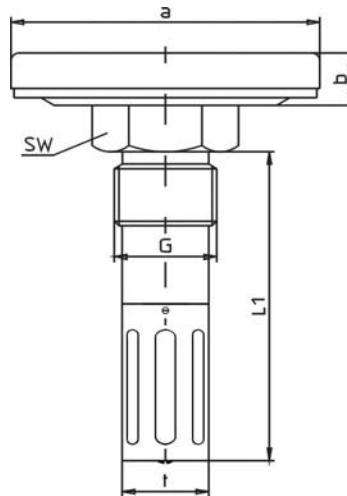
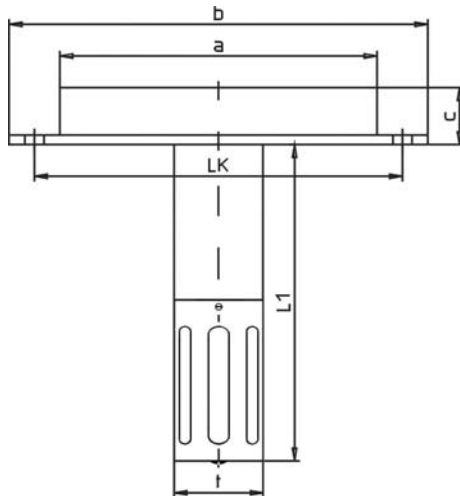


Case:	Steel zincd / varnished - Diam. 160
Bezel:	Brass chromed
Dial:	Aluminium, white varnished lettering and graduation black
Pointer:	Aluminium, black adjustable at end of stem
Window:	Instrument glass - Safety glass - Max. drag pointer - Max./min. drag pointer
Distance ring:	Internal made of aluminium
Stem:	L = 100 x Ø 28 mm Cu-varnished - Other lengths are available
Measuring system:	Tripple fold for rel. humidity
Measuring range:	0-100% rel. humidity
Operating range:	-30+80°C
Connection:	Backwards - Bottom (not available with double stem)
Features:	- With sliding contact for signalling - With double scale for humidity and temperature -10+50°C (2 stems backwards - Ø 160 only with surface mounting flange)
Mounting method:	With back flange, steel varnished, surface mount - With back flange made of stainless steel 1.4301 (diam.100 only) or with fixed connection thread G 1 B made of brass - Stem with movable flange steel zincd Ø 80 mm, surface mount
Accuracy class:	2.5 - OPTIONS



Mounting method:	Article number:	
Diam. 100	Back flange	G 1 B brass
	894	890



Type	a	b	LK	c	t
894	100	132	116	18	28

Type	a	b	t	G	SW
890	100	15	28	1 B	41

These gauges are produced for air duct and climatic chamber installations. For good ventilation of the humidity measuring element the stem is fitted with air vents. The air vents are sealed with a stainless steel gauze inside the stem, in order to prevent the infiltration of dust and therefore the damage of the measuring element.

As such gauges are insensitive to their orientation, the instrument can be mounted axial, vertical or in oblique position.

The measuring element is suitable for a permanent temperature up to plus 80°C. A temporary max. load up to 120°C is acceptable and causes no damage.

If the gauge works at steady low humidity, an annual activation and a recalibration of the measuring element should be made.

The activation takes place by bandaging the perforation of the stem with a wet cloth (approx. 60 minutes). The gauge should then indicate approx. 96% rel. humidity. Perhaps the instrument can be recalibrated by using a screwdriver.

Masses and dimensions are conform to current company standard. Changes to improve our gauges will be made without preannouncement.