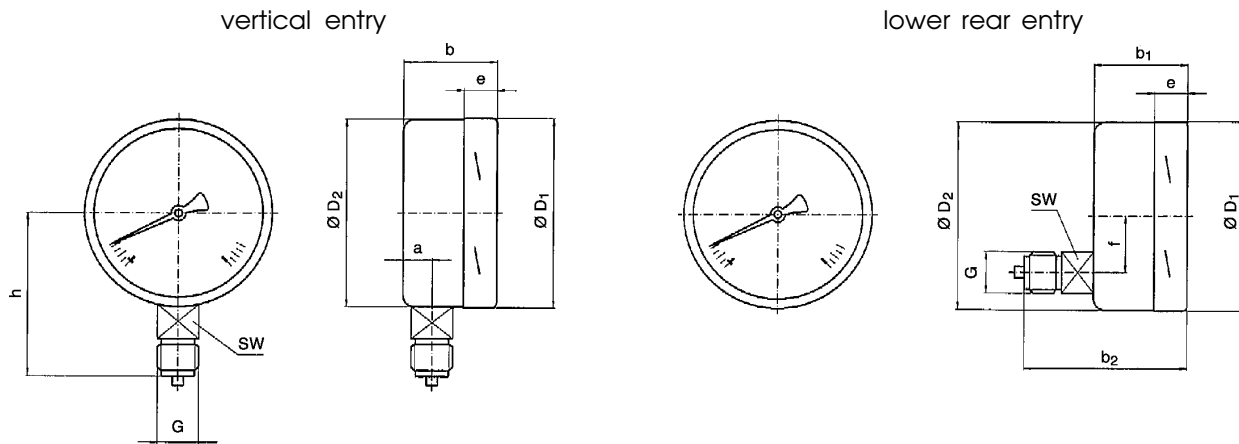


case:	stainless steel, polished - liquid-filled - contacts - surface mounting flange
bezel:	bayonet, stainless steel, polished - panel mounting flange
dial:	aluminium, white figures and graduation black
pointer:	knife edge pointer aluminium, black
window:	instrument glass - laminated safety glass
movement:	Cu-alloy, wear parts argentan
pressure element:	Cu-alloy >= 100 bar stainless steel 1.4571 >= 1000 bar Ni-Fe-alloy
connection:	Cu-alloy, >= 1000 bar stainless steel vertical and rear entry G1/2, SW 22 (EN 837-1/7.3)
measuring range:	0/0.6 bar ... 0/1600 bar or equivalent other units of pressure or vacuum
accuracy (EN 837-1/6):	class 0.6
working pressure:	steady: full scale value fluctuating: 0.9 x full scale value short time: 1.3 x full scale value
operating temp.:	ambient: TMIN -40°C, TMAX +60°C, medium: TMAX +60°C - OPTIONS



dimensions


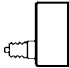
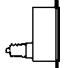
standard version



diam.	dimensions (mm)											net weight (kg)
	a	b	b1	b2	D1	D2	e	f	G	h ± 1	SW	
160	15.5	49.5 ¹⁾	49.5 ¹⁾	83 ¹⁾	161	159	17.5	50	G 1/2	118	22	1.10

connection acc. to DIN 16 288.

¹⁾measuring ranges <= 4 bar and >= 100 bar + 16 mm

type		312.20		
diam.		160		
version				
-1200 - 0	mbar	9400	x	x
-1 - 0	bar	9401	x	x
-1 + 0.6		9402	x	x
-1 + 1.5		9403	x	x
-1 + 3		9404	x	x
-1 + 5	bar	9405	x	x
-1 + 9		9406	x	x
-1 + 15	bar	9423	x	x
0 - 0.6		9407	x	x
0 - 1		9408	x	x
0 - 1.6		9409	x	9424
0 - 2.5	bar	9410	x	9425
0 - 4		9411	x	x
0 - 6	bar	9412	x	9426
0 - 10		9413	x	9427
0 - 16		9414	x	9428
0 - 25		9415	x	9429
0 - 40	bar	9416	x	x
0 - 60		9417	x	x
0 - 100	bar	9418	x	9430
0 - 160		9419	x	9431
0 - 250		9420	x	9432
0 - 400		9421	x	9433
0 - 600		9422	x	x
0 - 1000		x	-	-
0 - 1600	x	-	-	

Dimensions and technical data according to technical standard of today. Changes which make our products better will be made without proclaiming.