

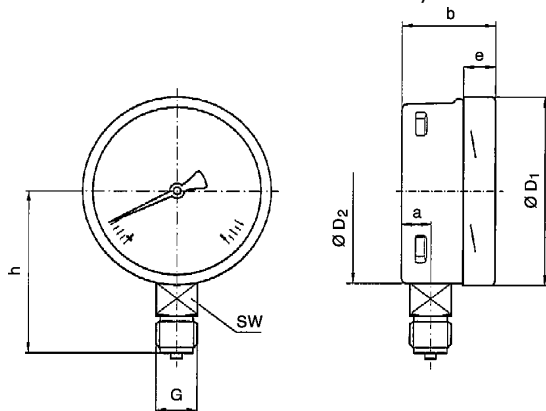
case:	stainless steel - surface mounting flange
bezel:	bayonet, stainless steel - panel mounting flange
dial:	aluminium, white figures and graduation black
zero adjustment:	through window
pointer:	aluminium, black
window:	instrument glass
movement:	Cu-alloy
pressure element:	Cu-alloy
connection:	Cu-alloy, vertical or rear entry G1/2, SW 22 (EN 837-1/7.3)
measuring range (EN 837-1/5):	0/10mbar ... 0/600 mbar (diam. 100) 0/6 mbar ... 0/600 mbar (diam. 160) or equivalent other units of pressure or vacuum
accuracy (EN 837-1/6):	class 1.6
working pressure:	steady: full scale value fluctuating: 0.9 x full scale value - overpressure or vacuum safety
operating temp.:	ambient: TMIN -20°C, TMAX +60°C, medium: TMAX +100°C (vertical entry), TMAX +80°C (rear entry) - OPTIONS
special versions:	process industry series complete in stainless steel



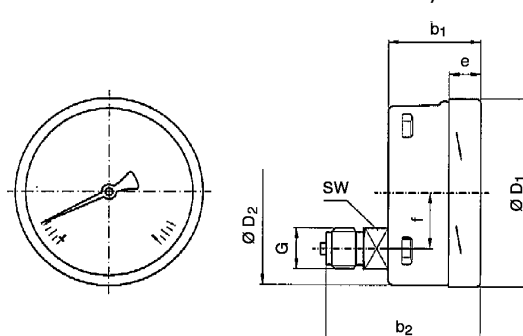
dimensions

standard version

diam. 100, vertical entry



diam. 100, lower rear entry



diam.	dimensions (mm)											net weight (kg)
	a	b	b1	b2	D1	D2	e	f	G	h ± 1	SW	
100	15.5	49.5	49.5	83	101	99	17.5	30	G1/2	87	22	0.60
160	15.5	49.5	49.5	83	161	159	17.5	50	G1/2	118	22	1.10

connection acc. to DIN 16288.

type	612.20				
diam.	100		160		
version					
overpressure safety	without	10 x	without		
-400 - 0	x	x	x	x	x
-250 - 0	9359	x	x	x	x
-160 - 0	9320	x	x	x	x
-100 - 0	9321	x	x	x	x
- 60 - 0	9322	x	x	x	x
- 40 - 0	9349	x	x	x	x
- 25 - 0	x	x	-	x	x
- 16 - 0	x	x	-	x	x
- 10 - 0	x	x	-	x	x
- 6 - 0	-	-	-	x	x
-25 +15	9323	x	x	x	x
-40 +20	9324	x	x	x	x
other ranges	x	x	x	x	x
0 - 6	-	-	-	x	x
0 - 10	9365	x	-	x	x
0 - 16	x	x	-	x	x
0 - 25	9325	9340	-	9350	x
0 - 40	9326	9341	9395	9351	x
0 - 60	9327	9342	9396	9352	x
0 - 100	9328	9343	9397	9353	x
0 - 160	9329	9344	9398	9354	x
0 - 250	9330	9345	9399	9355	x
0 - 400	9331	9346	x	9356	x
0 - 600	9366	x	x	x	x

Dimensions and technical data according to technical standard of today. Changes which make our products better will be made without proclaiming.