

case:

steel, black

- stainless steel
- surface mounting flange
- contacts
- liquid-filled (diam. 100)

bezel:

slip-on ring steel, black

- stainless steel
- panel mounting flange

dial:

aluminium, white

figures and graduation black

pointer:

1 pointer: aluminium, black

1 graduated disk indicator: aluminium, white
scaled +/- 50% of main scale range



window:

instrument glass

- red mark-pointer

movement:

Cu-alloy, wear parts argentan

pressure element:

Cu-alloy

connection:

Cu-alloy, 2 x G1/2, SW 22, (EN 837-1/7.3)

indicated with (+) and (-)

- pressure system of stainless steel 1.4571

design:

**2 independant bourdon tube pressure elements
pressure entries in-line.**

measuring range
(EN 837-1/5):

0/0.6 bar ... 0/1000 bar

Scale range must be selected in consideration of the highest static pressure applied. The pressure differential to be indicated should be no less than 1/6 of the full scale range.

accruacy
(EN 837-1/6):

class 1.6

working pressure:

steady: full scale value

fluctuating: 0.9 x full scale value

short time: 1.3 x full scale value

operating temp.:

ambient: TMIN -25°C, TMAX +60°C,

medium: TMAX +60°C

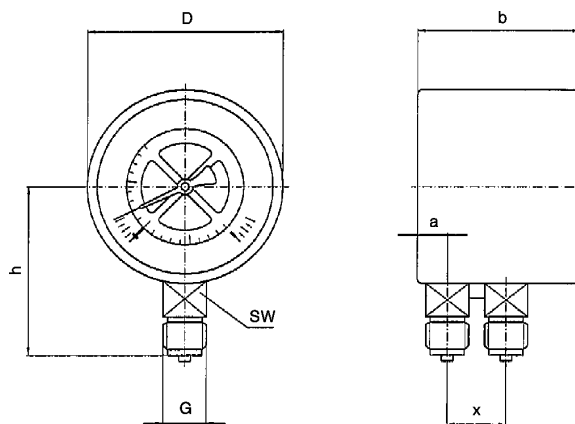
TMAX +200°C pressure system of stainless steel

- without liquid filling

- OPTIONS

dimensions

standard version



diam.	dimensions (mm)							net weight (kg)
	a	b	D	G	h ± 1	X	SW	
100	15.5	82	100	G 1/2	87	32	22	1.00
160	15.5	86.5	160	G 1/2	118	32	22	1.60

connection acc. to DIN 16 288.

type	711.12	
	100	160
diam.		
version		
0-0.6	x	x
0-1	8971	8981
0-1.6	8972	8982
0-2.5	8973	8983
0-4	8974	8984
0-6	8975	8985
0-10	8976	8986
0-16	8977	x
0-25	x	x
0-40	x	x
0-60	x	x
0-100	x	x
0-160	x	x
0-250	x	x
0-400	x	x
0-600	x	x
0-1000	x	x

Dimensions and technical data according to technical standard of today. Changes which make our products better will be made without proclaiming.