

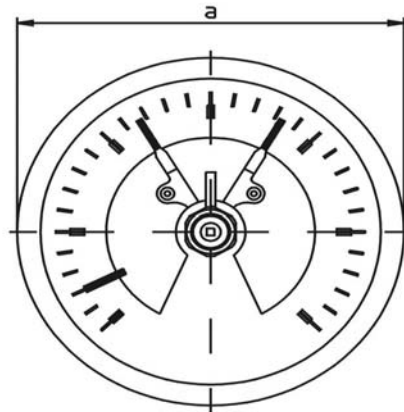
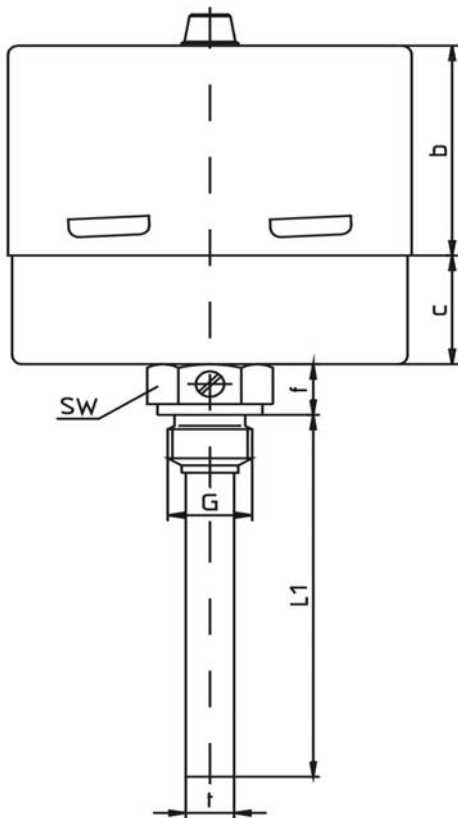
- Case: Bayonet-fitted stainless steel, 1.4301
- Diam. 160 Bayonet-fitted steel, black varnished
- Bezel: Diam. 100 Bayonet-fitted stainless steel, 1.4301
- Diam. 160 Bayonet-fitted steel, black varnished
- Dial: Aluminium, white varnished
lettering and graduation black
- Pointer: Aluminium, black
adjustable at end of stem
- Window: Polycarbonate, with adjust lock, oil-tight
with seperate contact adjust key
- Seal washer: Rubber, black
- Stem: G 1/2 A brass detachable with fixing screw
multi-part soldered - tube Ø 12 x 1
- Further connections see overleaf resp. 001
- Connection: Backwards
- If vertical connection then gas-filled thermometers
page 021 or inductive contacts should be used
- Measuring range: 0-120°C
- Resp. opposite
- Special model: - Cable junction box
- Contact relais
- Alarm contacts: Sliding, single or double
adjustable over the whole range
- Contacts as changer
- Magnetic contacts depending on range on request
- Induktive contacts
- Wiring: 1 mtr. cable with PG gland
- Accuracy class: 2

- OPTIONS

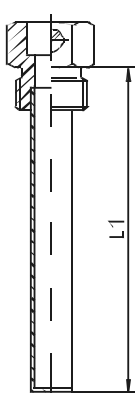
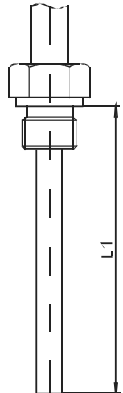
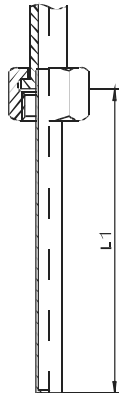
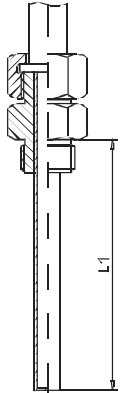
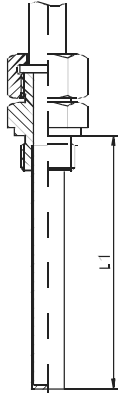
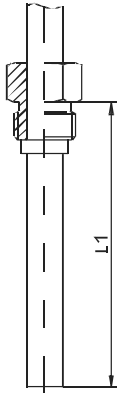
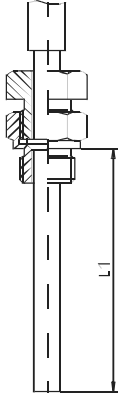


Diam. 100		Article-number:						Meas. range	Graduation
Contact type:		S 1	S 2	S 11	S 12	S 21	S 22		
Stem 63 mm		10400	10406	10412	10418	10424	10430	-30+50°C	1.0
Stem 100 mm		10401	10407	10413	10419	10425	10431	-20+60°C	
								0+80°C	
Stem 120 mm		10402	10408	10414	10420	10426	10432	0+100°C	2.0
Stem 160 mm		10403	10409	10415	10421	10427	10433	0+120°C	
								0+160°C	
								0+200°C	
Stem 200 mm		10404	10410	10416	10422	10428	10434	0+250°C	5.0
Stem 250 mm		10405	10411	10417	10423	10429	10435	0+300°C	

Function: 1 = contact makes when pointer reaches set point
 2 = contact breaks when pointer reaches the set point
 S = sliding contact
 Further contact prescriptions on page 090



Type	a	b	c	f	SW	G	t
10400	100	58	30	14	27	1/2 A	12
10436	160	68	30	14	27	1/2 A	12

0	1	2	3	4	5	6
Sep. pocket with fixing screw	Fixed connection male thread	Union nut female thread	Union nut with double nipple	Union nut with additional thermowell acc. to DIN 16179 form CD or DIN 43772 form 8	Turnable male thread	Movable clamp connection
						

Masses and dimensions are conform to current company standard. Changes to improve our gauges will be made without preannouncement.