

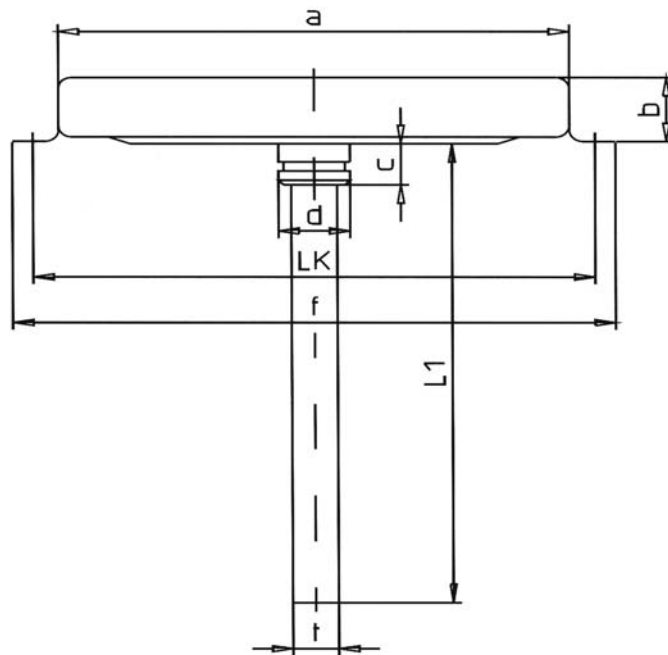
Case:	Steel zinced - Varnished
Bezel:	Steel nickel-plated
Dial:	Aluminium, white varnished lettering and graduation black - Red mark - Imprint - Double scale °C/°F
Pointer:	Aluminium, black adjustable at end of stem - Silicone damped
Window:	Instrument glass - Safety glass - Max. drag pointer - Max./min. drag pointer - Red mark pointer
Distance ring:	without
Stem:	Brass, Ø 9 mm - Stainless steel 1.4571
Mounting method:	With back flange lightweight version, round for surface mounting on air duct
Connection:	Backwards
Measuring range:	0-120°C - Resp. opposite
Accuracy class:	2 - Accuracy class 1.0 - Works test certificate - OPTIONS



		Article number:				
	Diam.	63	80	100	Meas. range	Graduation
Stem	50 mm	1661	1681	1701	-40+40°C -30+50°C -20+60°C -20+40°C -15+45°C -10+60°C -10+50°C 0+40°C 0+50°C 0+60°C 0+80°C	1.0
Stem	100 mm	1662	1682	1702	0+100°C 0+120°C 0+160°C 0+200°C	
Stem	150 mm	1663	1683	1703	0+250°C 0+300°C	5.0
Stem	200 mm	1664	1684	1704	0+400°C 0+500°C *	10.0
Stem	250 mm	1665	1685	1705	0+600°C *	

Other lengths are available !

*Stem stainless steel needed !



Type	a	b	c	d	f	LK	t
1660	63	14	9	14	82	74	9
1680	80	14	9	14	102	91	9
1700	100	14	9	14	118	110	9

Masses and dimensions are conform to current company standard. Changes to improve our gauges will be made without preannouncement.