

Case:	Made of shining brass
Stem:	G 1/2 B brass
Measuring element:	Glass tube Elastic mounted
Measuring range:	0-130°C
Filling:	Alcohol red
Graduation:	1.0
Accuracy class:	± 2°C
Version:	<p>Small straight Upper section L = 155 x Ø 20 mm Stem L = 45 x Ø 10 G 1/2 B made of solid brass</p> <p>Small angle 90° Upper section L = 155 x Ø 20 mm Stem L = 45 x Ø 10 G 1/2 B made of solid brass</p> <p>Big straight Upper section L = 255 x Ø 25 mm Stem L = 63 x Ø 12 G 1/2 B made of brass-multipiece soldered</p> <p>Big angle 90° Upper section L = 255 x Ø 25 mm Stem L = 63 x Ø 12 G 1/2 B made of brass-multipiece soldered</p>



	Complete instruments	Loose glass tubes
Small straight	Article number 800	801
Small angle 90°	850	851
Big straight	820	821
Big angle 90°	870	871

- OPTIONS

Measuring range -10+50°C

Measuring range 0-160°C

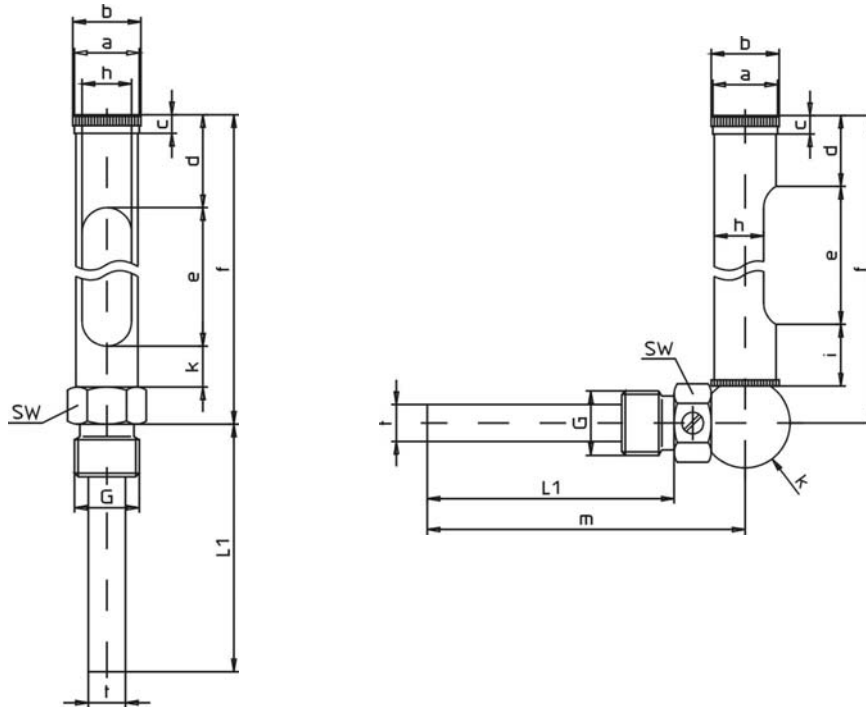
Measuring range 0-200°C

Stem length 63 mm

Stem length 100 mm

Stem length 160 mm

Connection thread G 3/4 B



Type	a	b	c	d	e	f	h	SW	G	i	k
800	20	22	6	30	105	155	16	22	1/2 B	-	13
850	20	22	6	23	105	155	16	22	1/2 B	20	29
820	25	28	7	43	180	255	19	27	1/2 B	-	18
870	25	28	7	43	180	255	19	27	1/2 B	18	34

Masses and dimensions are conform to current company standard. Changes to improve our gauges will be made without preannouncement.