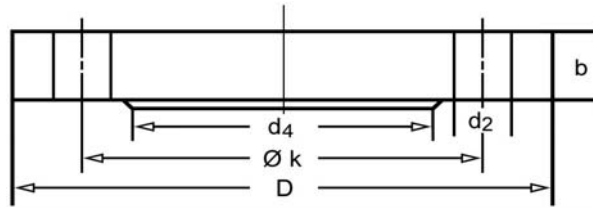


Flange DIN 2527
Form C / D / E
with raised face

Is used in connection with all common screw-in and
weld-in thermowells.



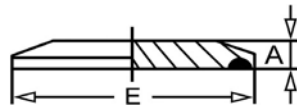
E.g.:

ND 16

NW DN	Flange			Screws		
	D	b	k	Quantity	Thread	d2
15	95	14	65	4	M 12	14
20	105	16	75	4	M 12	14
25	115	16	85	4	M 12	14
32	140	16	100	4	M 16	18
40	150	16	110	4	M 16	18
50	165	18	125	4	M 16	18

Clamp-flange
(TRI-CLAMP)
ISO 2852

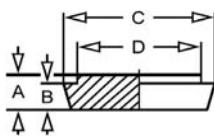
Can be attached to all temperature measuring instruments with stainless steel stem.



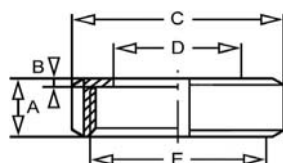
Size	DN	A	E
1"	25	6	50,5
1 1/2"	40	6	50,5
2"	50	6	64
3"	65	7	91

Round slotted nut
DIN 11 851 and
conical coupling

Can be attached to all temperature measuring instruments with stainless steel stem.



DN	A	B	C	D
15	9	6	28	24
20	11	8	36	30
25	13	10	44	35
32	13	10	50	41
40	13	10	56	48
50	14	11	68	61



DN	A	B	C	D	Size
15	18	3	44	25	1"
20	20	3	54	31	
25	21	3	63	36	
32	21	3	70	42	1 1/2"
40	21	3	78	49	
50	22	3	92	62	2"

Certificates:

DIN EN 10 204 2.1 and 2.2 available. 3.1 and 3.2 on request.