

Case:	Ø 63 stainless steel 1.4301 Ø 78 stainless steel 1.4301
Bezel:	Stainless steel 1.4301
Dial:	Aluminium, white varnished from measuring range 200°C on ALU-blank lettering and graduation black
Pointer:	Aluminium, black adjustable at the back
Window:	Ø 63 instrument glass Ø 78 instrument glass, domed - max. drag-pointer (flat glass)
Handling:	With tilt stand - with lug for wall mount
Measuring system:	Bimetal spiral spring
Measuring range:	0-300°C - resp. opposite
Accuracy class:	2
Special features:	Ø 78 with measuring range 0-500°C and 0-600°C dial made of enamelled steel

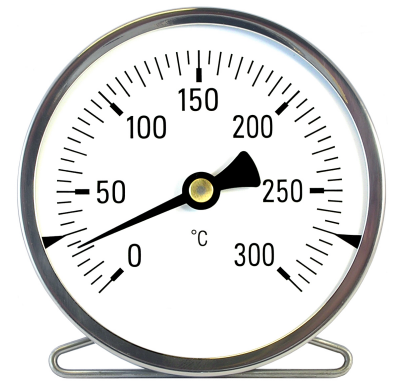


Fig. 16

Fig. 13 S: For mounting in oven door etc.  
on the back of the case with 2 stem nuts M4,  
center distance 36 mm, without fasteners

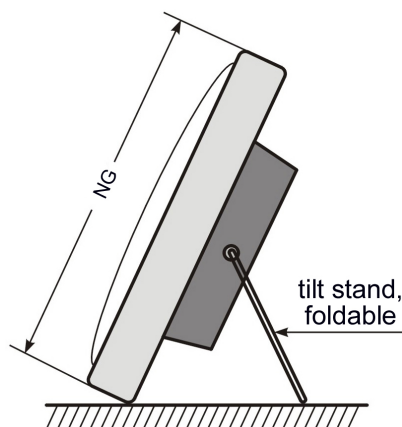
- OPTIONS

Measuring-range	Graduation
-30 +70°C	1°
-30 +50°C	
-20 +40°C	
-20 +60°C	
-20 +80°C	2°
-20 +100°C	
-10 +60°C	1°
-10 +50°C	
0 -60°C	
0 -80°C	
0 -100°C	2°
0 -120°C	
0 -160°C	
0 -200°C	
0 -250°C	5°
0 -300°C	
0 -350°C	
0 -400°C	10°

Article number:	1230011	1230012
Case Ø 63 mm	1230011	1230012
Case Ø 78 mm	1230011	1230012

1) 0 -500°C	10°
1) 0 -600°C	10°

1) dial steel enamelled



The thermometer is designed for interior measurements of all kind. It can be used in electronically controlled ovens as comparison tool and also in stone ovens as reference tool.

The device is position-insensitive and therefore as required it is used in standing or lying position.

A foldable tilt stand which is rear attached to the case cants the instrument to a good read-off position.

The rear vent in the case allows the ventilating air free access to the measuring element. This makes a display correction possible.

### Attention:

Because of high risk of breakage water on the hot cover glass is to be avoided.

To prevent burns it should be noted that the case has still the displayed temperature when removing it from the oven.

Dimensions and technical data are conform to current company standard. Changes to improve our instruments will be made without preannouncement.